

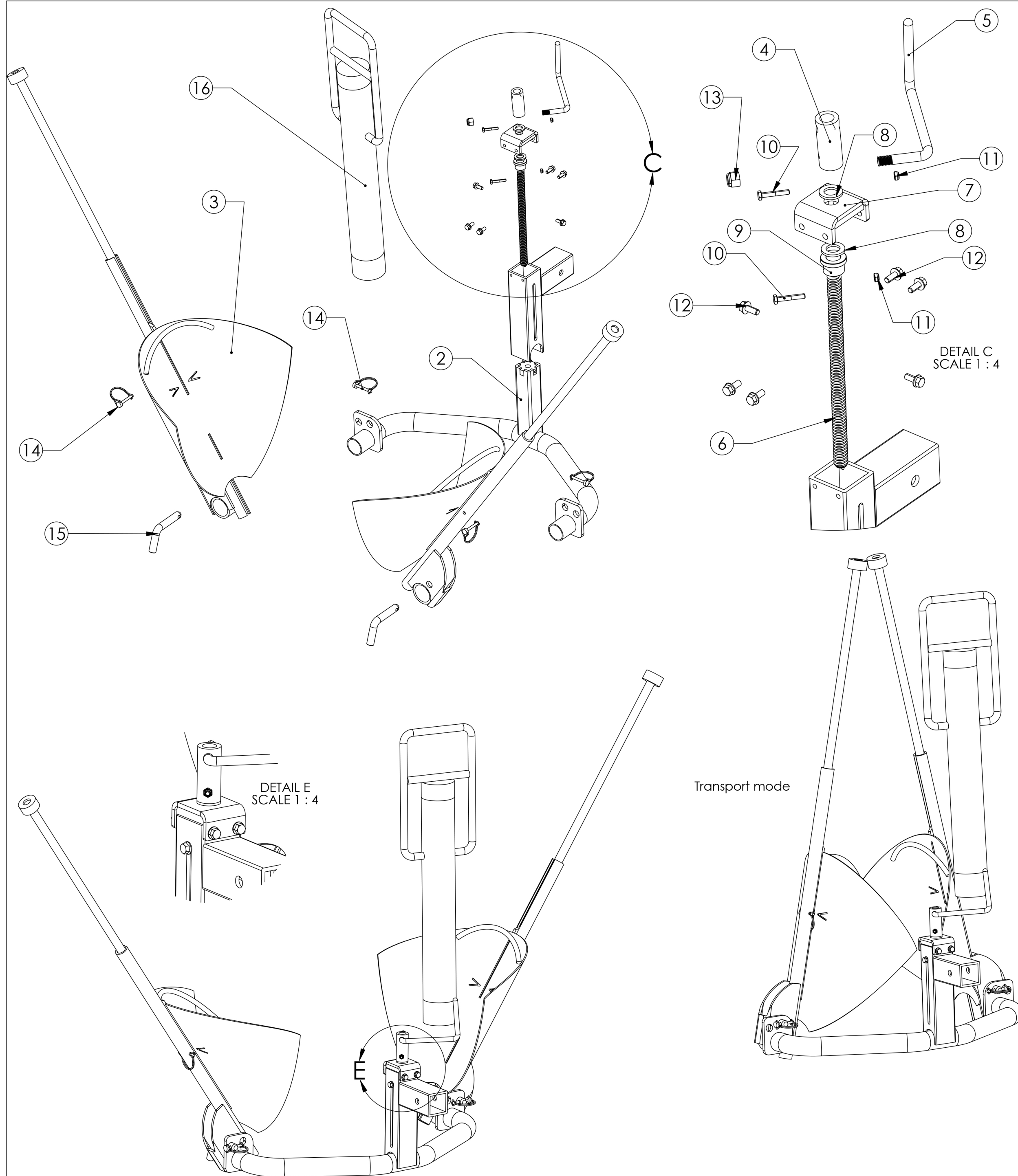


22000 Industrial Blvd Suite 250, Rogers, MN 55374 / 1-866-527-7637
www.motoalliance.com - motoinfo@motoalliance.com

IMPACT PRO Tree Spade

Assembly Instructions & User Info
SKU# CFG_IP4462_BK





| ITEM NO. | PART NUMBER | DESCRIPTION | QTY. |
|----------|-------------|---------------------------------------------------------|------|
| 1 | TS404 | Slotted Lift Receiver Weldment | 1 |
| 2 | TS400 | Tree Spade Support | 1 |
| 3 | TS501 | Spade Slide Assembly | 2 |
| 4 | TS124 | Crank Tube | 1 |
| 5 | TS125 | Crank Handle | 1 |
| 6 | TS127 | Right Hand, 3/4"-5 Acme Thread Size, 12" Long | 1 |
| 7 | TS405 | Rod Cap Weldment | 1 |
| 8 | SPL401 | Thrust Bearing | 2 |
| 9 | TS123 | Thrust Lug | 1 |
| 10 | B25002 | 1/4"-20 x 1-1/2" Grade 5 Zinc Finish Hex Cap Screw | 2 |
| 11 | N25001 | 1/4"-20 Grade 2 steel Jam Nylon Insert Lock Nut | 2 |
| 12 | B31002 | 5/16"-18 x .75" Serrated Hex Flange Bolt | 6 |
| 13 | N50001 | 1/2"-13 Grade 2 Zinc Finish Steel Nylon Insert Lock Nut | 1 |
| 14 | TS301 | Snapper Pin | 4 |
| 15 | TS100 | Locating Lock Pin | 2 |
| 16 | TS502 | Slide Hammer - 30lbs | 1 |



22000 Industrial Blvd Suite 250, Rogers, MN 55374 / 1-866-527-7637
www.motoalliance.com - motoinfo@motoalliance.com



22000 Industrial Blvd Suite 250, Rogers, MN 55374 / 1-866-527-7637
www.motoalliance.com - motoinfo@motoalliance.com

Product information

Warning and User Caution:

1. Do not exceed the rated capacity of the lift
2. Ensure your vehicles receiver hitch is adequate to support the lift an its attached implement.
3. Ensure that your lift system is secured to your vehicles receiver prior to operation.
4. Never allow passengers to ride on the lift or attached implements
5. Keep clear of bystanders when operating your lift and attached implements
6. Keep hands and feet clear when operating the lift and attachments
7. Use Caution when using the lift & attachments on uneven surfaces or sloped terrain. Due to the weight of carrying the tree in the spade, steering could be effected and could require front ballast to ensure more stability.
8. For offroad use only. Do not exceed 5mph when tree and spade are mounted to the machine.
9. Use only supplied steel driver for driving in spades, do not use a sledge hammer or other tool to drive in spades or damage could occur.
10. Keep hands and feet clear of all pinch points when operating your equipment.

Features & Capacity:

1. Heavy duty frame and Spade assemblies
2. Secondary height adjustment crank to set spade hoop frame height when installed on SPL500 1 point lift system.
3. Fold up spades for transportation down trails to remote areas.
4. Spades Stored in upward position with lynch pins, pins removed prior to driving spades into the ground once hoop is at ground level.
5. Steel Spade Driver for driving in spades, 30 lbs approx.
6. For use with Impact Pro HD Series 1 point lift
7. Truncated root ball size capacity, 18"-20" diameter at approx. 16" depth
8. Max tree diameter 2" or less

Maintenance:

Peridocally lubricate all pivot, hinge and threaded scREW points to ensure smooth operation and long life of your attachment. Light oil or spray lube eg. Fluid Film or similar.

